
Using Collect-View Tool in Contiki-OS

Shantanoo Desai prepared for Prof. Dr. Anna Förster

Sustainable Communication Networks
University of Bremen

November 20, 2015

Collect-View Overview

Using Collect-View on TelosB
Firmware for TelosB
Accessing Collect-View

Contents of this section

Collect-View Overview

Collect-View

- Collect-View is a Java based Application in Contiki-OS for sensor visualization
- Involves a Mote acting as a **SINK** and other Motes acting as **Sources**
- **Sources** send important parameters to **SINK**
- Uses Graphical User Interface for visualizing parameters

Contents of this section

Using Collect-View on TelosB
Firmware for TelosB
Accessing Collect-View

Programming Collect-view on Tmote Sky

- Uploading the shell files onto Motes (need more than one)
Go to: *examples/collect* [code: collect-view-shell.c]
- Connect the Sky motes and make sure they are connected on the Virtual Machine and perform the operations on terminal

```
make TARGET=sky savetarget
```

to check which mote is connected to which USB port:

```
make sky-motelist
```

for mote on /dev/ttyUSB0 :

```
make MOTE=1 collect-view-shell.upload
```

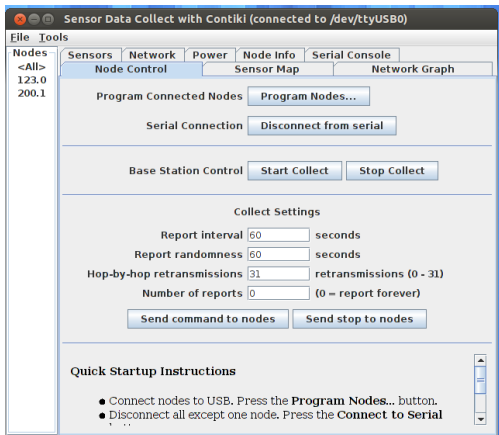
for mote on /dev/ttyUSB1 :

```
$ make MOTE=2 collect-view-shell.upload
```

Collect-View tool

to open the **Collect-View** tool go to : *tools/collect-view* and in terminal:

```
ant run
```



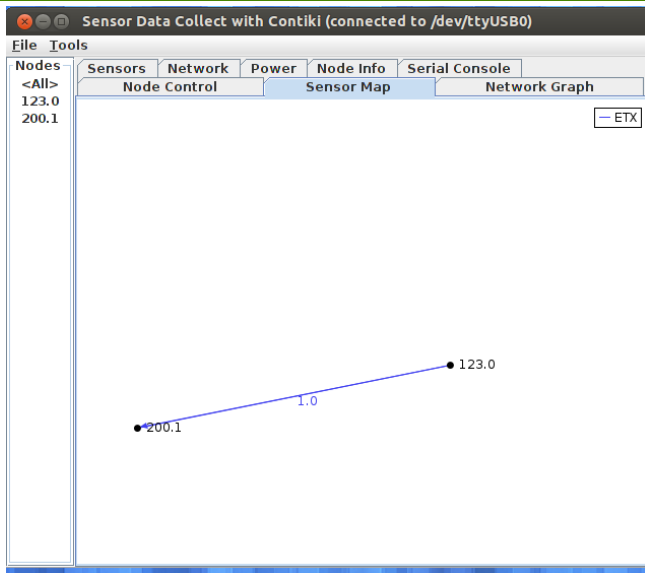
Collect-View tool

- close this one. go to: *tools/collect-view/dist* and add the following in terminal to determine which mote will be SINK

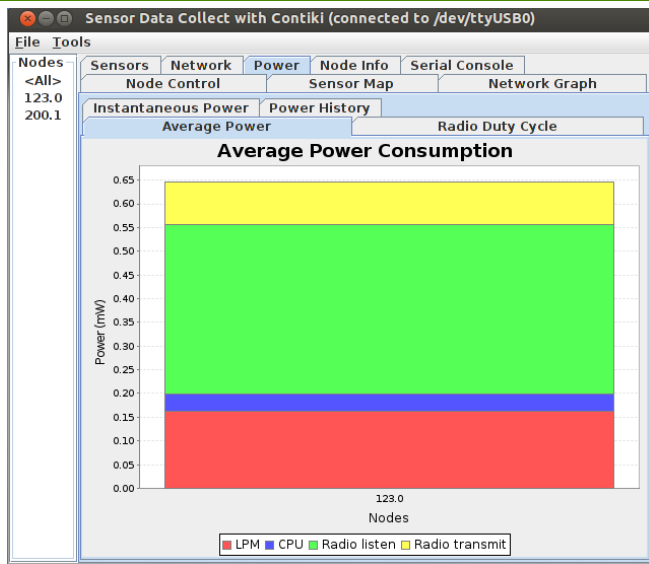
```
$ java -jar collect-view-jar /dev/ttyUSB0
```

- The tool opens again, click on **Tools** menu and click on “Run Init Script”
- supply power to other sensor nodes (preferable when not connected to same Computer)
- click on the **Node Control** tab and click on **Start Collect** button
- click on other tabs to see the various features

Collect-View Tool Tabs



Collect-View Tool Tabs



Programming using GUI

When programming in a group do the following:

- Follow the original steps of burning the shell code on the motes (on Individual PC)
- decide on who gets to be SINK and other needs to be source
- The SINK node needs to configure the following:
 1. Open the Collect-View app from *tools/collect-view* and use *ant run*
 2. Press the "Program Nodes"
 3. Press "Connect to Serial" button
 4. To collect data : Press "Send Collect"
 5. To change the frequency of data collection: set the various values and press "Send Command to Nodes"