

E. Gleichstellung

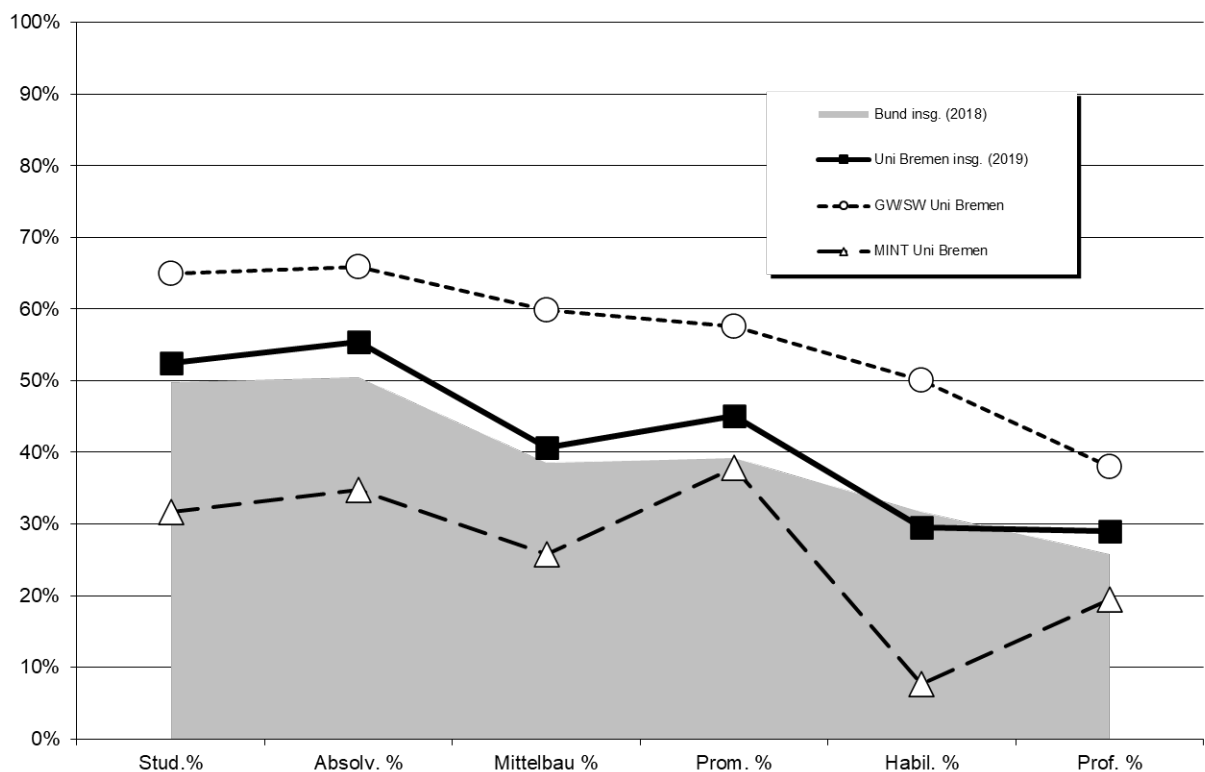
1. Kaskadenmodell: weibl. Anteile auf den verschiedenen Qualifikationsstufen

	Anteil weiblich in %					
	Stud. %	Absolv. %	Mittelbau %	Prom. %	Habil. %	Prof. %
FB 01 Physik/E-Technik	24%	18%	20%	26%		9%
FB 02 Bio/Chemie	60%	67%	37%	60%		23%
FB 03 Mathe/Informatik	30%	33%	26%	21%		29%
FB 04 Prod.technik	20%	22%	21%	26%		9%
FB 05 Geowiss.	35%	37%	43%	56%		25%
MINT Uni Bremen	32%	35%	26%	38%	8%	19%
FB 06 Rechtswiss.	61%	61%	43%	52%		18%
FB 07 Wirtschaftswiss.	43%	43%	40%	43%		17%
FB 08 Soz./Pol.	54%	55%	51%	54%		48%
FB 09 Kulturwiss.	71%	77%	59%	73%		43%
FB 10 Sprach./Lit.wiss.	76%	78%	75%	77%		48%
FB 11 Human./Gesundheits	82%	86%	68%	64%		41%
FB 12 Erziehungswiss.	76%	77%	71%	65%		49%
GW/SW Uni Bremen	65%	66%	60%	58%	50%	38%
MARUM			53%			53%
SOCIUM			40%			40%
sonstige Einheiten			53%			53%
Zentralverw.			48%			48%
Einheiten außerh. FB			48%			48%
Uni Bremen insg. (2019)	52%	55%	41%	45%	30%	29%
Bund insg. (2018)	50%	50%	39%	39%	32%	26%

Promotionen und Habilitationen Uni Bremen: jeweils 3-Jahresdurchschnitt-Schnitt ('17-'19)

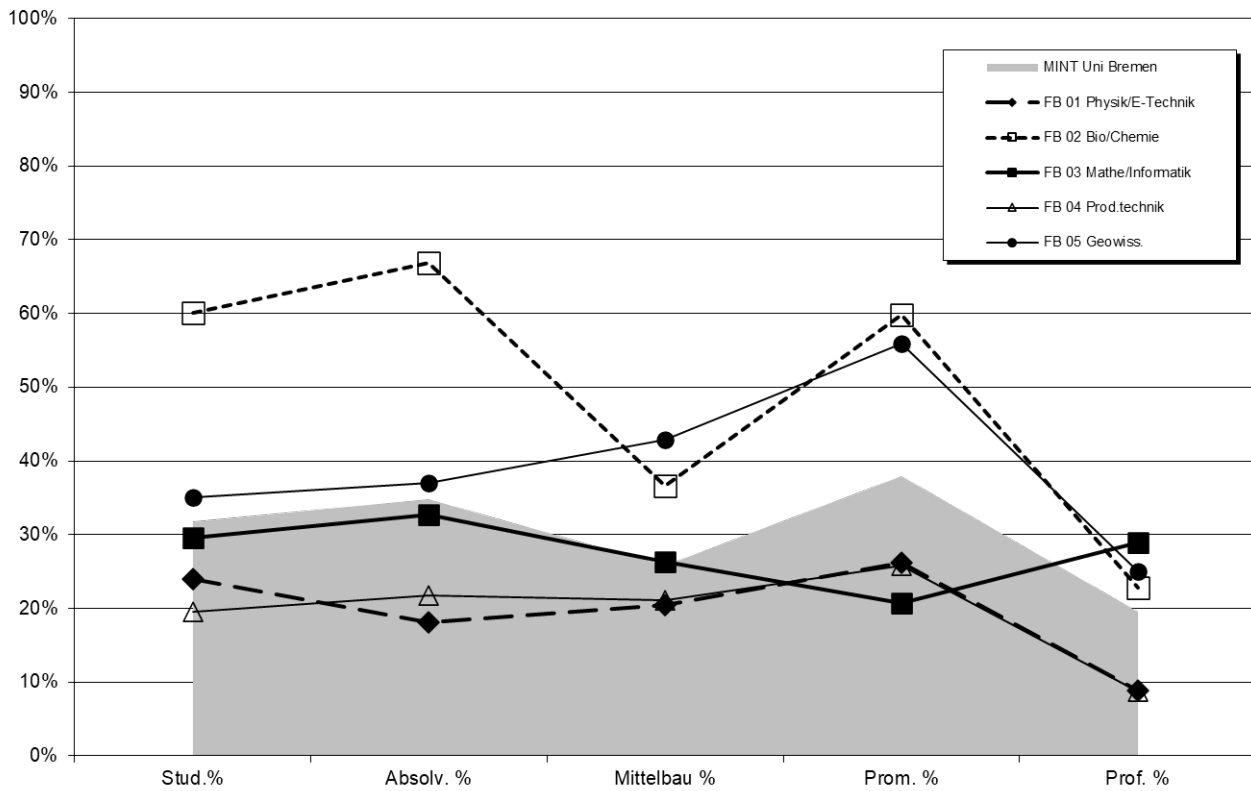
Bund-Daten: aus der Bundesstatistik (Destatis2018), bereinigt um Human-, Veterinärmedizin u. Agrarwiss.

Kaskadenmodell Uni Bremen Fächergruppen im Vergleich zur Bundesstatistik

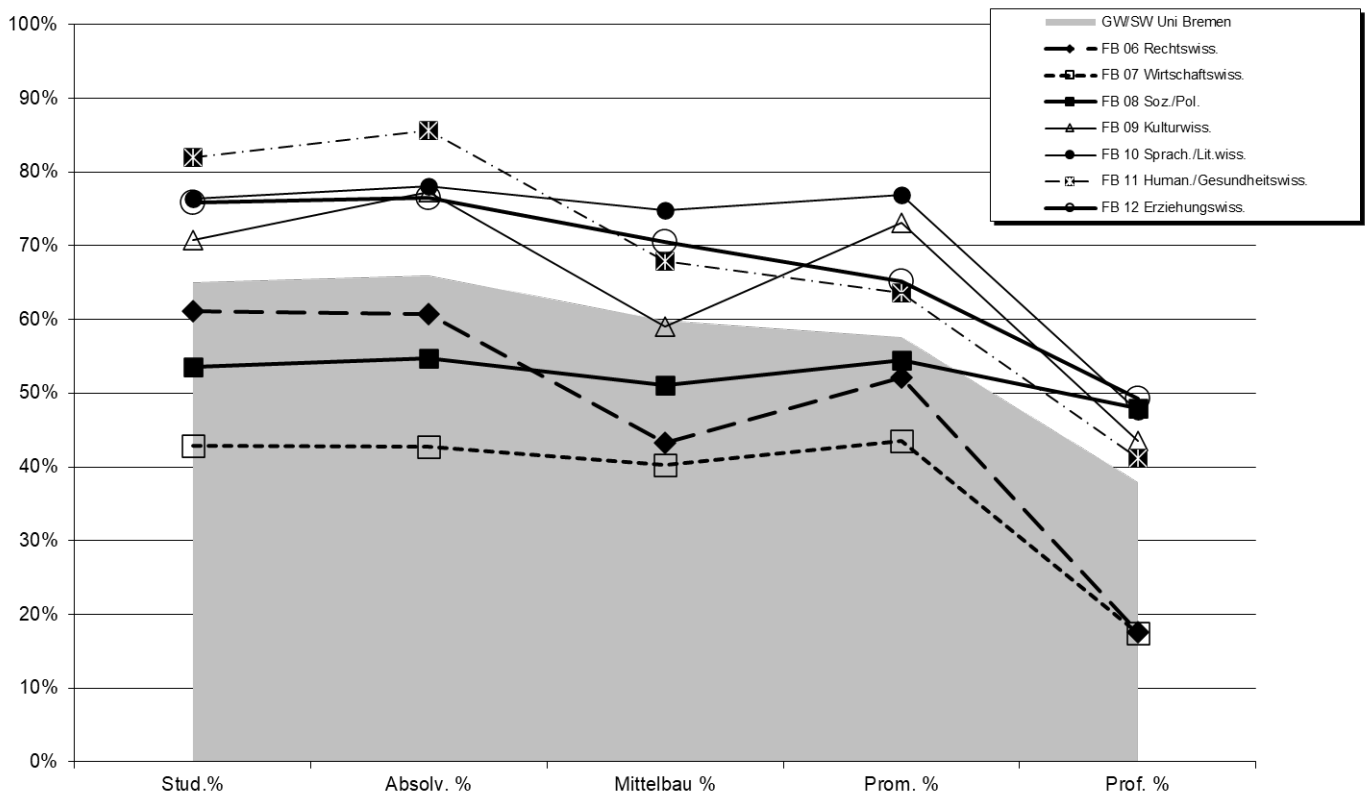


Fortsetzung: Kaskadenmodell

Kaskadenmodell Mathe/Informatik/Naturwiss./Technik (MINT)

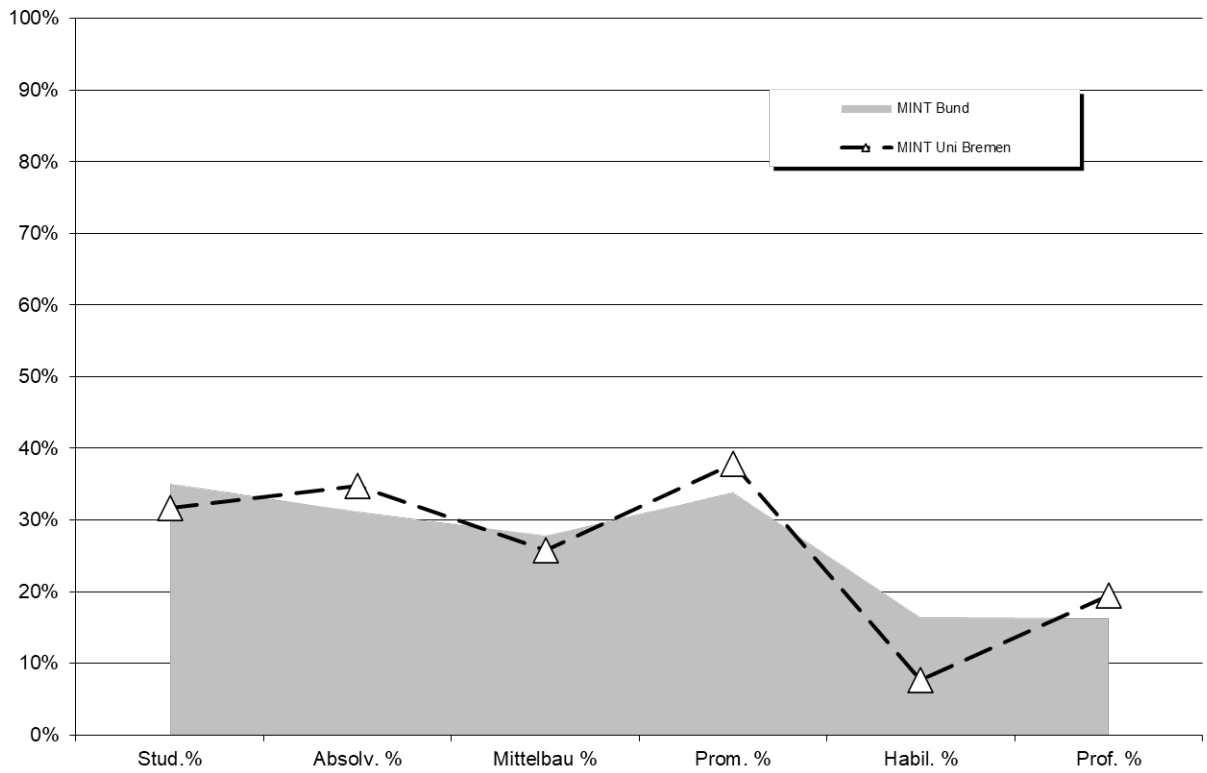


Kaskadenmodell Geistes-u. Sozialwissenschaften (GW/SW)

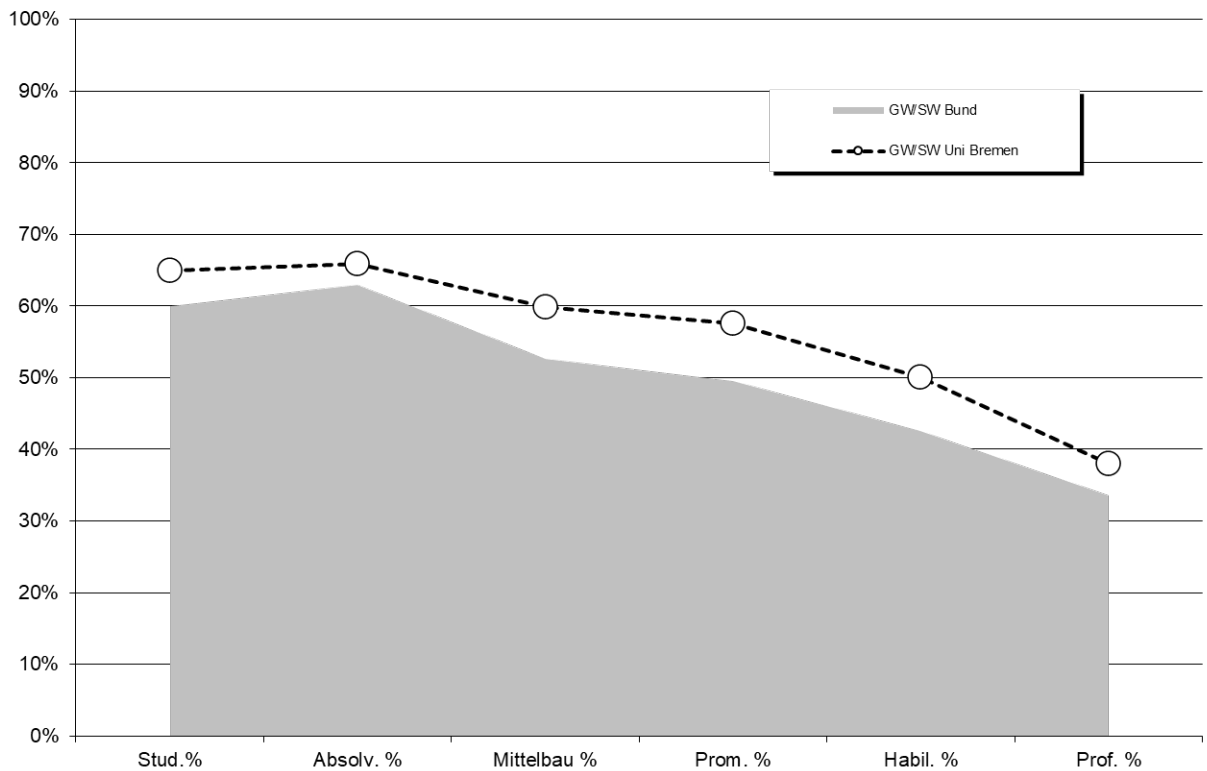


Fortsetzung: Kaskadenmodell

Kaskadenmodell Uni Bremen Fächergruppen im Vergleich zur Bundesstatistik



Kaskadenmodell Uni Bremen Fächergruppen im Vergleich zur Bundesstatistik



2. Studierende/Promotionen/Personal: Anteile weiblich im Zeitverlauf

a) Studierende

Fachbereich	weibliche Anteile in %							
	WS 12/13	WS 13/14	WS 14/15	WS 15/16	WS 16/17	WS 17/18	WS 18/19	WS 19/20
FB 01	19,8%	16,9%	18,5%	19,4%	19,8%	20,5%	22,0%	23,9%
FB 02	57,3%	57,4%	57,0%	57,1%	58,5%	59,3%	59,3%	60,1%
FB 03	33,4%	31,8%	30,6%	30,9%	29,6%	28,8%	29,3%	29,5%
FB 04	19,0%	18,4%	19,1%	18,9%	18,4%	20,4%	20,1%	19,6%
FB 05	40,9%	39,9%	38,2%	36,8%	35,4%	36,2%	34,5%	35,1%
FB 06	57,4%	57,9%	57,1%	57,8%	58,4%	59,4%	60,6%	61,1%
FB 07	45,5%	45,2%	44,7%	44,1%	43,6%	43,1%	42,6%	42,9%
FB 08	48,8%	49,5%	50,6%	50,3%	51,5%	53,5%	53,1%	53,6%
FB 09	71,2%	72,2%	71,8%	73,0%	71,7%	70,4%	70,6%	70,7%
FB 10	76,2%	76,9%	76,9%	77,1%	76,5%	76,9%	76,4%	76,4%
FB 11	77,2%	78,5%	79,4%	79,9%	80,5%	81,0%	81,9%	82,0%
FB 12	79,9%	82,0%	75,6%	75,5%	75,5%	73,7%	74,3%	75,8%
o.A.	47,4%	57,9%	79,1%	78,5%	73,6%	75,6%	75,6%	75,3%
Uni gesamt	51,0%	50,7%	50,8%	51,2%	51,1%	51,8%	51,9%	52,5%

Fachbereich	weibliche Anteile in %							
	WS 12/13	WS 13/14	WS 14/15	WS 15/16	WS 16/17	WS 17/18	WS 18/19	WS 19/20
FB 01 - 05	31,6%	30,3%	30,2%	30,5%	30,1%	30,9%	31,2%	31,7%
FB 06 - 12	63,2%	63,6%	63,9%	64,0%	64,1%	64,5%	64,6%	65,0%
Uni Ges	51,0%	50,7%	50,8%	51,2%	51,1%	51,8%	51,9%	52,5%

b) Promotionen

	weibliche Anteile in %										
	2009	2010	2011	2012	2013	2014	2015	2016	2017	2018	2019
FB 01	24,3%	25,7%	29,0%	18,8%	23,4%	27,8%	14,7%	23,1%	31,3%	22,9%	25,0%
FB 02	49,3%	65,1%	58,9%	61,1%	57,1%	63,2%	63,0%	62,5%	64,7%	57,1%	56,4%
FB 03	30,0%	20,8%	4,5%	37,8%	39,4%	14,7%	20,0%	28,9%	23,3%	18,4%	20,0%
FB 04	11,1%	18,2%	19,0%	9,4%	3,8%	16,7%	12,5%	33,3%	21,1%	26,4%	30,3%
FB 05	45,2%	51,9%	50,0%	55,9%	30,4%	43,9%	31,0%	55,2%	53,3%	54,5%	60,7%
FB 06	25,7%	59,5%	31,8%	40,0%	42,1%	41,2%	56,3%	62,1%	52,4%	43,8%	66,7%
FB 07	32,3%	37,5%	10,0%	23,5%	37,9%	33,3%	30,4%	17,6%	22,2%	54,2%	48,1%
FB 08	56,7%	61,5%	70,0%	60,0%	52,2%	48,4%	55,6%	53,6%	53,6%	44,0%	65,4%
FB 09	53,3%	72,7%	66,7%	35,7%	75,0%	77,8%	100,0%	60,0%	63,6%	72,7%	100,0%
FB 10	55,6%	50,0%	50,0%	55,6%	71,4%	100,0%	87,5%	75,0%	83,3%	90,0%	60,0%
FB 11	62,5%	56,5%	65,4%	76,7%	66,7%	64,7%	60,0%	59,1%	59,4%	68,2%	66,7%
FB 12	33,3%	22,2%	50,0%	45,5%	50,0%	20,0%	54,5%	100,0%	71,4%	72,7%	40,0%
Gesamt	41,4%	48,8%	43,4%	44,4%	41,6%	42,8%	40,3%	45,9%	45,1%	44,7%	45,5%

	weibliche Anteile in %										
	2009	2010	2011	2012	2013	2014	2015	2016	2017	2018	2019
FB 01 - 05	39,0%	44,4%	40,7%	39,6%	33,7%	38,4%	31,2%	41,1%	39,7%	36,3%	37,7%
FB 06 - 12	44,2%	53,8%	47,7%	51,5%	53,3%	51,8%	55,4%	54,0%	53,7%	59,7%	60,2%
Gesamt	41,4%	48,8%	43,4%	44,4%	41,6%	42,8%	40,3%	45,9%	45,1%	44,7%	45,5%

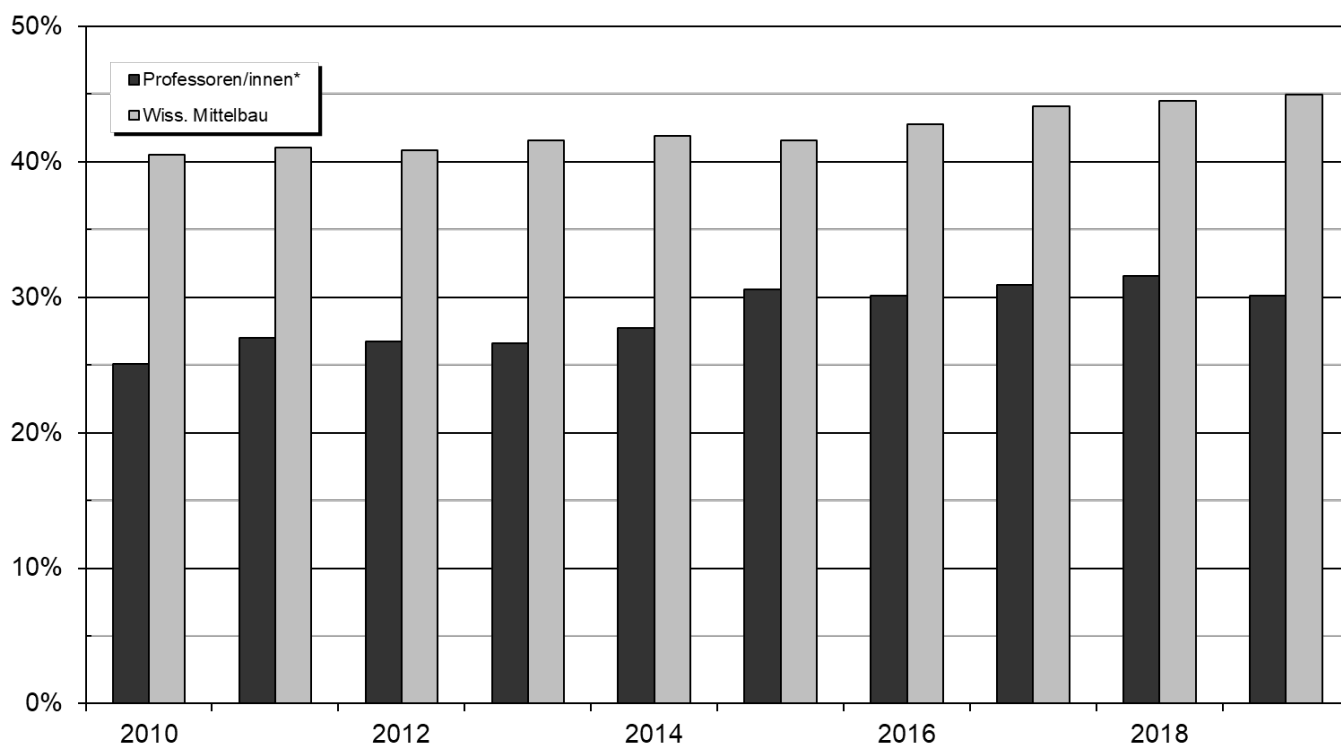
Fachbereiche sind über den 1. Gutachter zugeordnet.

c) Personal (Köpfe:) Weibliches Personal insgesamt (Köpfe in %) im Zeitverlauf

	2010	2011	2012	2013	2014	2015	2016	2017	2018	2019
Arbeiter/innen	41%	41%	40%	38%	36%	33%	32%	31%	31%	31%
Sekretariate	99%	99%	99%	99%	99%	99%	99%	99%	99%	99%
Techniker/innen	37%	37%	35%	36%	36%	35%	33%	33%	32%	33%
Verwaltung	76%	77%	77%	77%	78%	78%	77%	78%	77%	78%
Nichtwiss. Personal insg.	63%	63%	63%	63%	64%	63%	62%	62%	62%	63%
Professoren/innen*	25%	27%	27%	27%	28%	31%	30%	31%	32%	30%
Wiss. Mittelbau	40%	41%	41%	42%	42%	42%	43%	44%	44%	45%
Wiss. Personal insg.	38%	39%	39%	40%	40%	40%	41%	42%	43%	43%
Personal insg.	47%	48%	48%	48%	48%	48%	48%	49%	49%	50%

* Koop. Prof enthalten

Anteil weiblich in %



d) Personal (VZÄ) Weibliches Personal insgesamt (Vollzeitäquivalente in %) im Zeitverlauf

	2010	2011	2012	2013	2014	2015	2016	2017	2018	2019
Arbeiter/innen	28%	29%	29%	27%	26%	24%	23%	23%	24%	25%
Sekretariate	99%	99%	100%	100%	99%	99%	99%	99%	98%	99%
Techniker/innen	32%	31%	30%	31%	31%	30%	29%	29%	28%	29%
Verwaltung	72%	73%	73%	74%	75%	75%	74%	75%	74%	76%
Nichtwiss. Personal insg.	57%	57%	57%	58%	58%	58%	57%	58%	57%	59%
Professoren/innen*	24%	26%	26%	26%	28%	30%	29%	29%	30%	29%
Wiss. Mittelbau	36%	37%	37%	37%	38%	38%	38%	40%	41%	41%
Wiss. Personal insg.	34%	35%	35%	36%	36%	36%	36%	38%	39%	39%
Personal insg.	43%	43%	43%	43%	44%	44%	44%	45%	45%	46%

* Koop. Prof enthalten

Fortsetzung: weiblicher Anteil in % Personal (VZÄ)

Wissenschaftlicher Mittelbau

	2008	2009	2010	2011	2012	2013	2014	2015	2016	2017	2018	2019
FB 01	22%	21%	18%	17%	19%	18%	17%	19%	18%	18%	20%	20%
FB 02	48%	49%	46%	49%	49%	48%	49%	50%	43%	42%	39%	37%
FB 03	28%	23%	23%	25%	24%	26%	25%	22%	26%	29%	30%	26%
FB 04	23%	24%	23%	25%	26%	22%	19%	22%	19%	22%	23%	21%
FB 05	30%	30%	24%	25%	26%	26%	29%	29%	27%	31%	36%	43%
IW/NW	28%	26%	24%	25%	26%	25%	25%	25%	24%	26%	27%	26%
FB 06	44%	46%	47%	42%	45%	44%	44%	41%	41%	40%	40%	43%
FB 07	31%	29%	28%	32%	32%	32%	32%	33%	36%	36%	39%	40%
FB 08	47%	51%	49%	48%	40%	46%	54%	46%	50%	49%	51%	51%
FB 09	50%	56%	53%	51%	50%	51%	51%	54%	52%	56%	59%	59%
FB 10	66%	69%	70%	68%	71%	68%	71%	72%	75%	72%	74%	75%
FB 11	55%	57%	58%	59%	56%	61%	58%	59%	63%	69%	68%	68%
FB 12	63%	68%	66%	67%	64%	66%	69%	73%	74%	74%	71%	71%
GW/SW	52%	56%	56%	54%	52%	53%	55%	55%	57%	58%	59%	60%
MARUM					35%	38%	38%	33%	39%	41%	39%	40%
SOCIUM					46%	46%	46%	51%	47%	53%	54%	53%
sonstige Einheiten	34%	38%	39%	41%	46%	46%	46%	51%	47%	48%	46%	48%
Zentralverw.	48%	63%	62%	69%	72%	61%	59%	69%	69%	82%	84%	85%
Einheiten außerh. FB	34%	39%	40%	42%	44%	44%	44%	44%	45%	48%	47%	48%
Insgesamt	35%	37%	36%	37%	37%	37%	38%	38%	38%	40%	41%	41%

Prof (inc. Junior)

	2008	2009	2010	2011	2012	2013	2014	2015	2016	2017	2018	2019
FB 01	9%	8%	6%	6%	6%	6%	6%	9%	6%	6%	9%	9%
FB 02	25%	19%	17%	17%	16%	18%	18%	20%	20%	19%	21%	23%
FB 03	23%	24%	24%	27%	25%	25%	30%	28%	33%	31%	30%	29%
FB 04	5%	5%	5%	5%	5%	5%	4%	9%	9%	9%	8%	9%
FB 05	7%	15%	15%	19%	22%	20%	22%	22%	23%	18%	24%	25%
IW/NW	16%	15%	14%	15%	15%	15%	17%	18%	19%	18%	19%	19%
FB 06	33%	21%	36%	43%	31%	25%	14%	13%	18%	13%	12%	18%
FB 07			6%	7%	6%	6%	16%	17%	15%	10%	20%	17%
FB 08	45%	35%	35%	37%	41%	44%	47%	49%	47%	48%	58%	48%
FB 09	45%	45%	35%	47%	55%	55%	52%	60%	64%	63%	60%	43%
FB 10	40%	37%	39%	44%	44%	39%	39%	52%	50%	52%	47%	48%
FB 11	38%	43%	43%	43%	46%	45%	53%	53%	41%	41%	47%	41%
FB 12	56%	64%	64%	56%	50%	47%	50%	50%	41%	40%	39%	49%
GW/SW	38%	36%	36%	40%	40%	39%	40%	43%	40%	40%	42%	38%
MARUM					42%	29%	30%	33%	33%	45%	45%	53%
SOCIUM										100%	20%	38%
sonstige Einheiten	8%	17%	18%	17%			26%	40%	38%	50%	43%	25%
Zentralverw.												
Einheiten außerh. FB	7%	16%	17%	15%	20%	16%	26%	33%	33%	48%	36%	38%
Insgesamt	25%	24%	24%	26%	26%	26%	28%	30%	29%	29%	30%	29%

e) Habilitationen

	weibliche Anteile in %										
	2009	2010	2011	2012	2013	2014	2015	2016	2017	2018	2019
NW	13%	25%		50%	33%						25%
GW	33%	11%	40%	33%	63%	100%	57%	63%	40%	80%	33%
Gesamt	18%	18%	25%	40%	55%	33%	57%	33%	24%	57%	29%